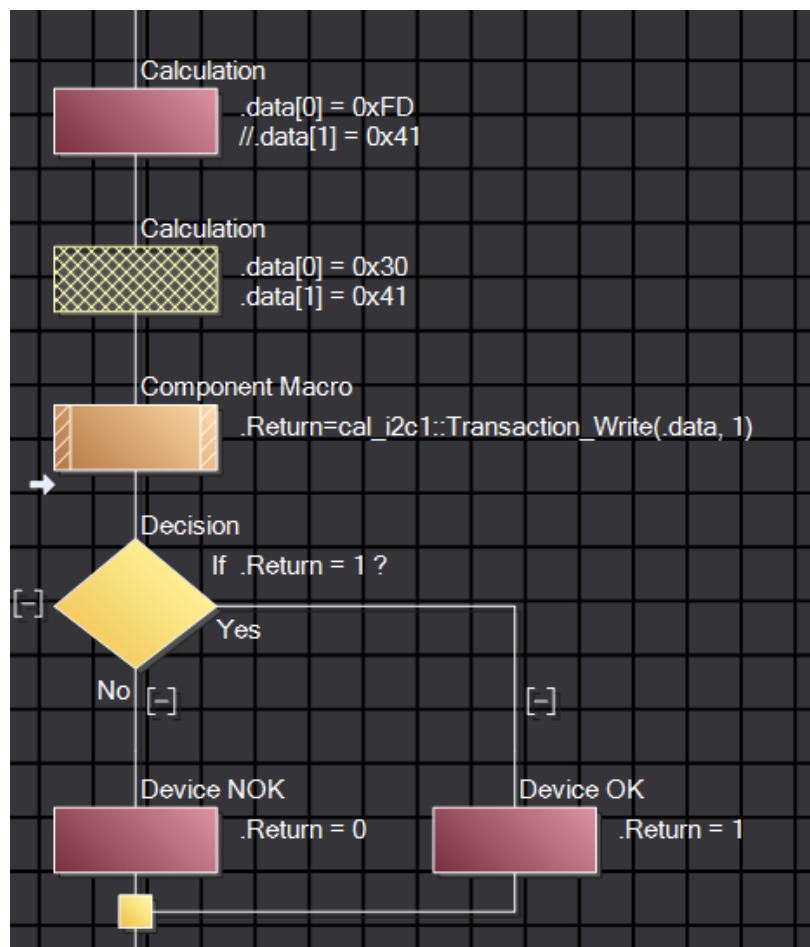
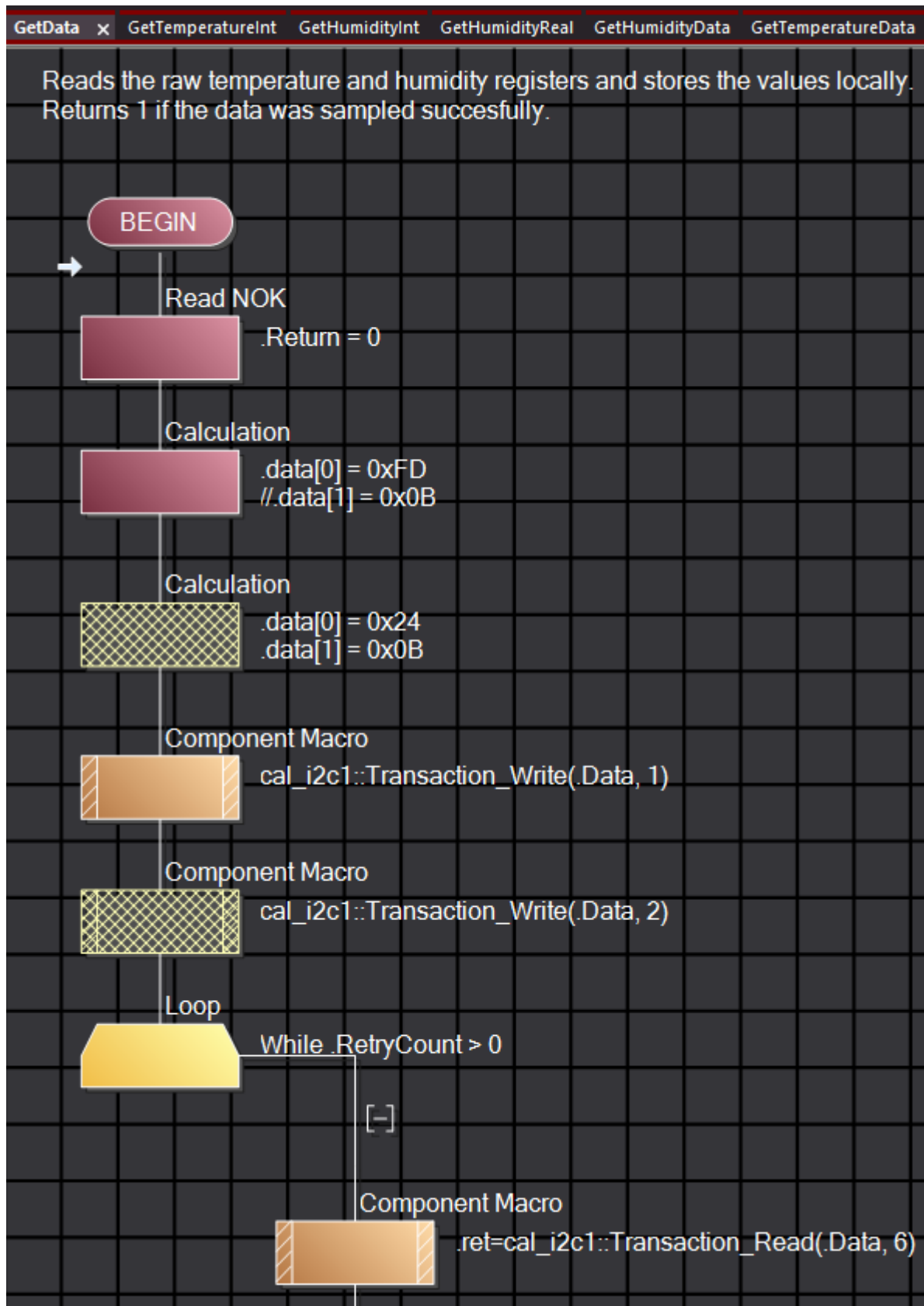


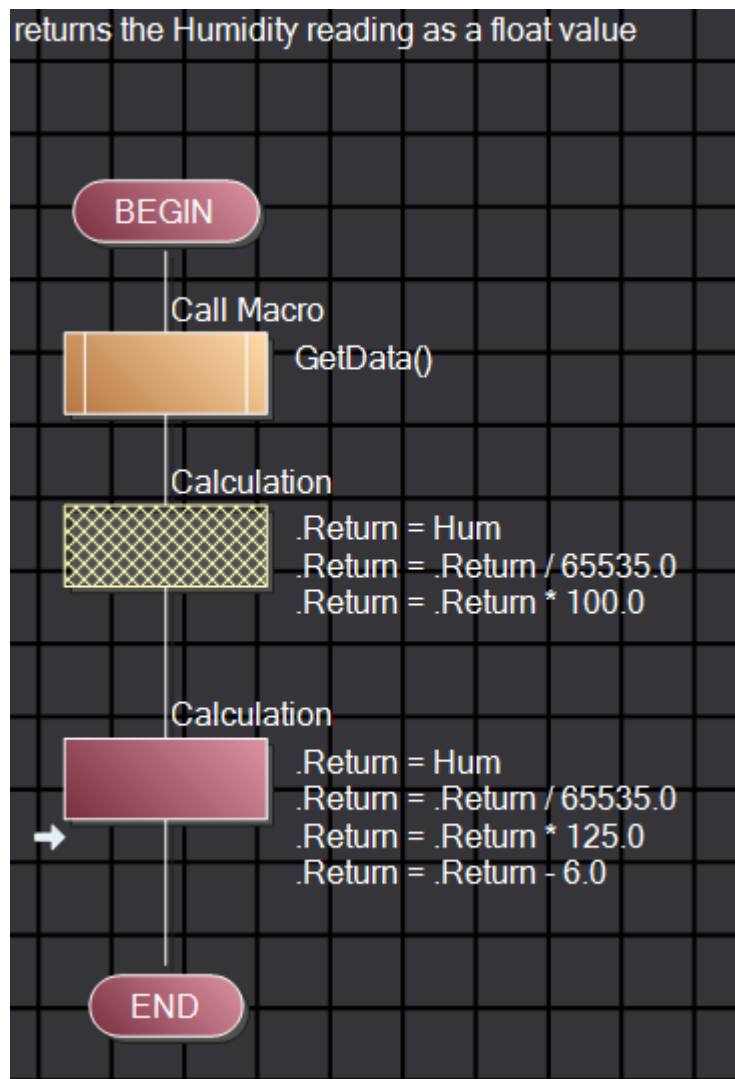
Change the init, it need's only 1Byte to write with 0xFD



Chane register to read to 0xFD (0X24 is a bad register, it starting the heater of the Sensor)



Change the Humidity calculation, it's different to the SHT31



Change the address selector. SHT41 has not a pin for the address, but the sensor is available with different address.

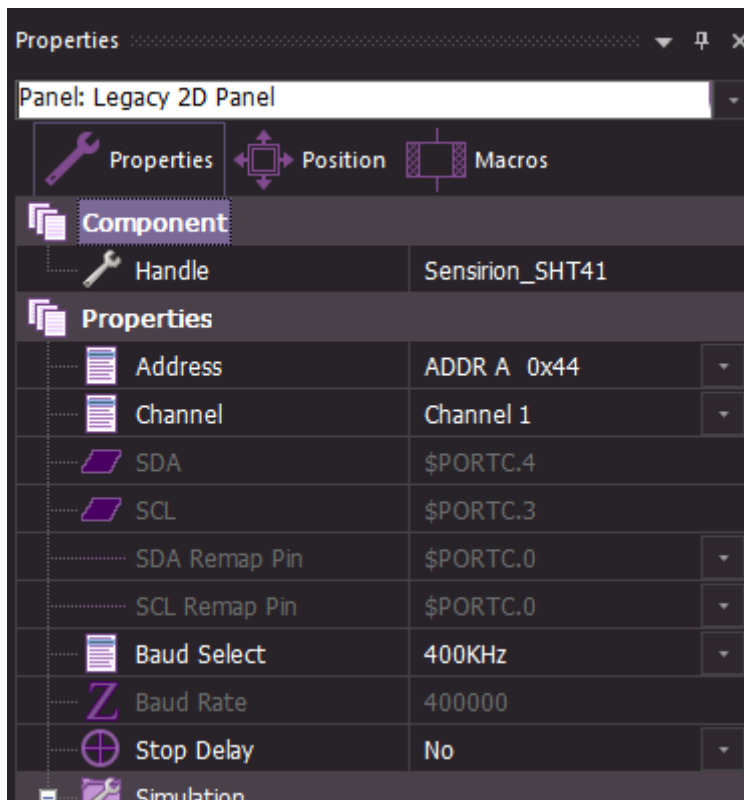
068 ADDR A 0x44  
069 ADDR B 0x45  
070 ADDR C 0x46

068 ADDR VSS 0x44  
069 ADDR VDD 0x45

## Device Overview

Products	Details
STS40-AD1B	0.2°C <i>T</i> accur., 0x44 I <sup>2</sup> C addr.
STS40-BD1B	0.2°C <i>T</i> accur., 0x45 I <sup>2</sup> C addr.
STS40-CD1B	0.2°C <i>T</i> accur., 0x46 I <sup>2</sup> C addr.

Change the handle



Change the name

