

# Flowcode ESP32 Toolchain Installation

## Download the Toolchain

Download the ESP toolchain installation executable from one of the following URLs.

<https://www.flowcode.co.uk/download/>

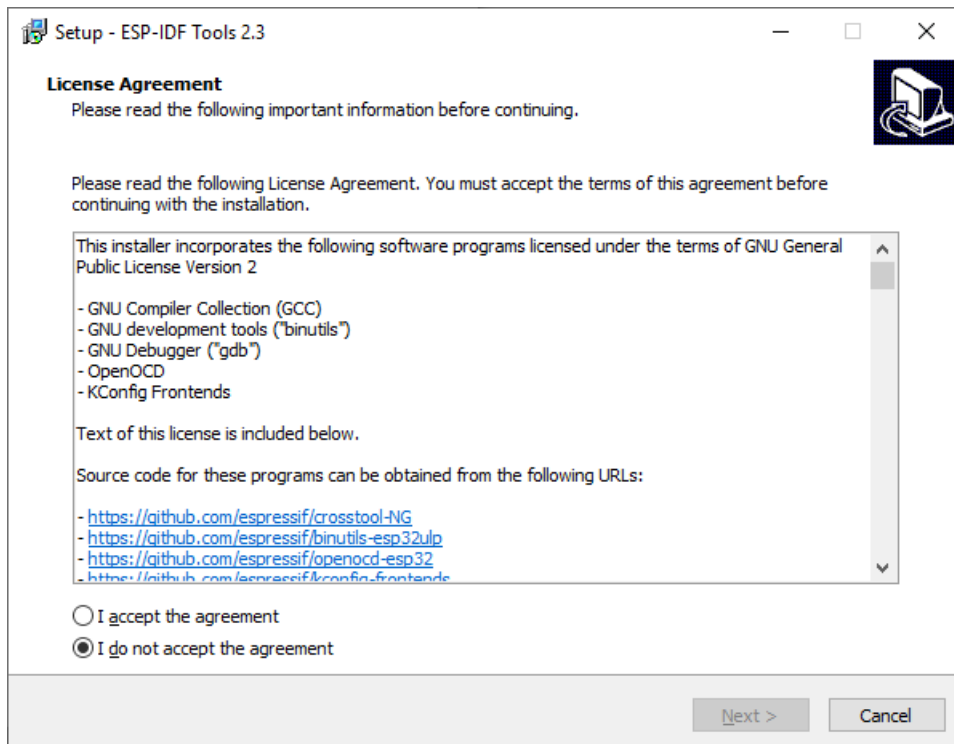
Later versions of the ESP IDF tools can be used if available but please note there may be unexpected problems with these as they have not been tested.

<https://dl.espressif.com/dl/esp-idf-tools-setup-2.3.exe>

Please report any problems or issues on the Flowcode user forum.

## Installation

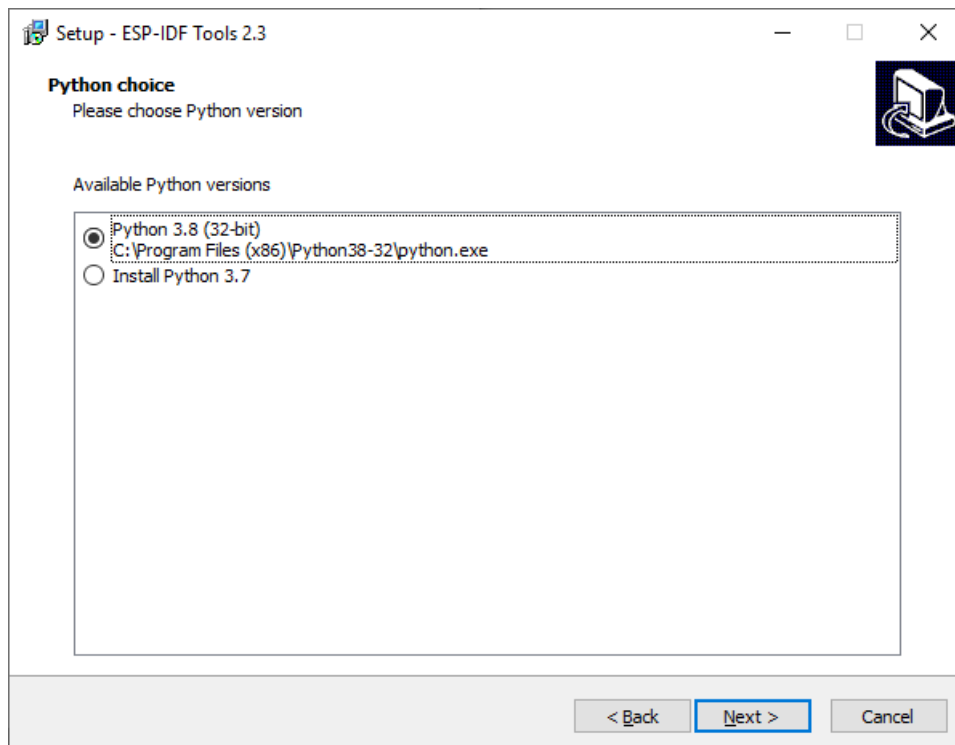
Once the download has finished run the installation file.



Select the item – I accept the agreement and click Next

If you have Python already installed then you can select your version of Python.

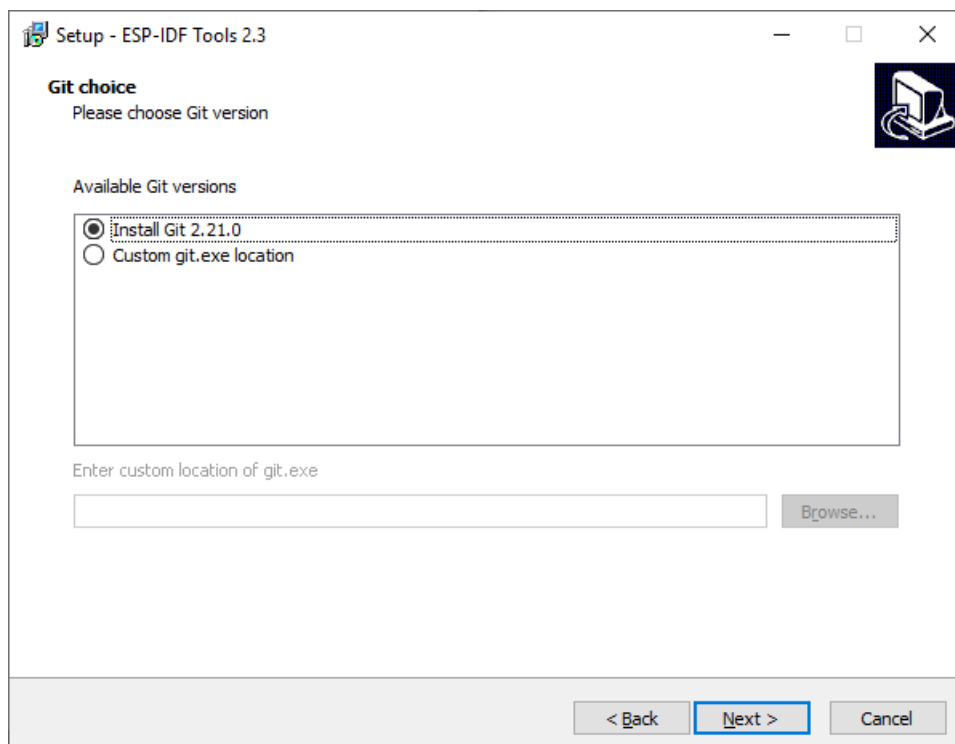
Otherwise select Install Python 3.7



Please note some versions of Python may cause the installer to fail, if this happens then try again and use the supplied version 3.7

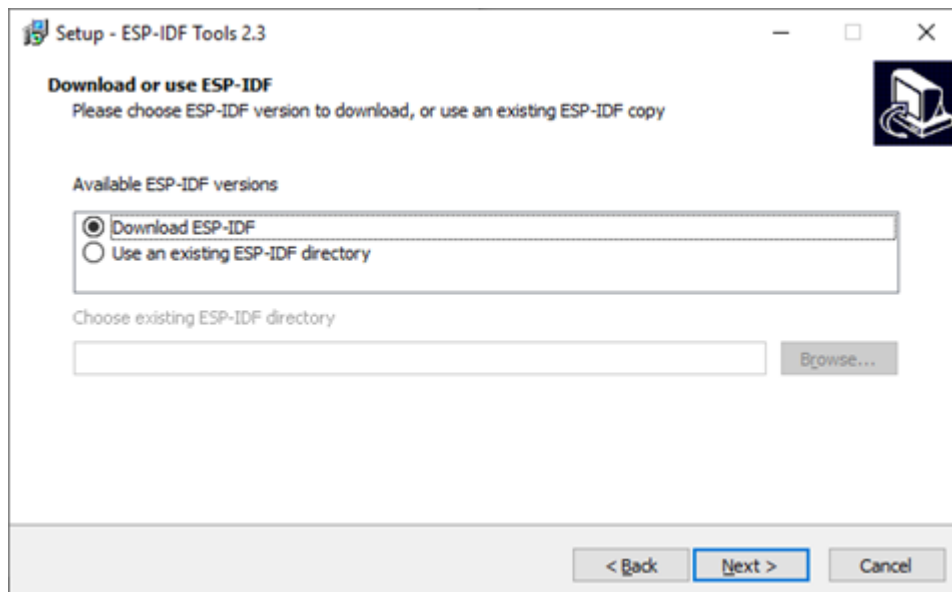
If you have Git already installed then you can select your version of Git.

Otherwise select Install Git



If you have an ESP-IDF already downloaded then you can select your version of ESP-IDF.

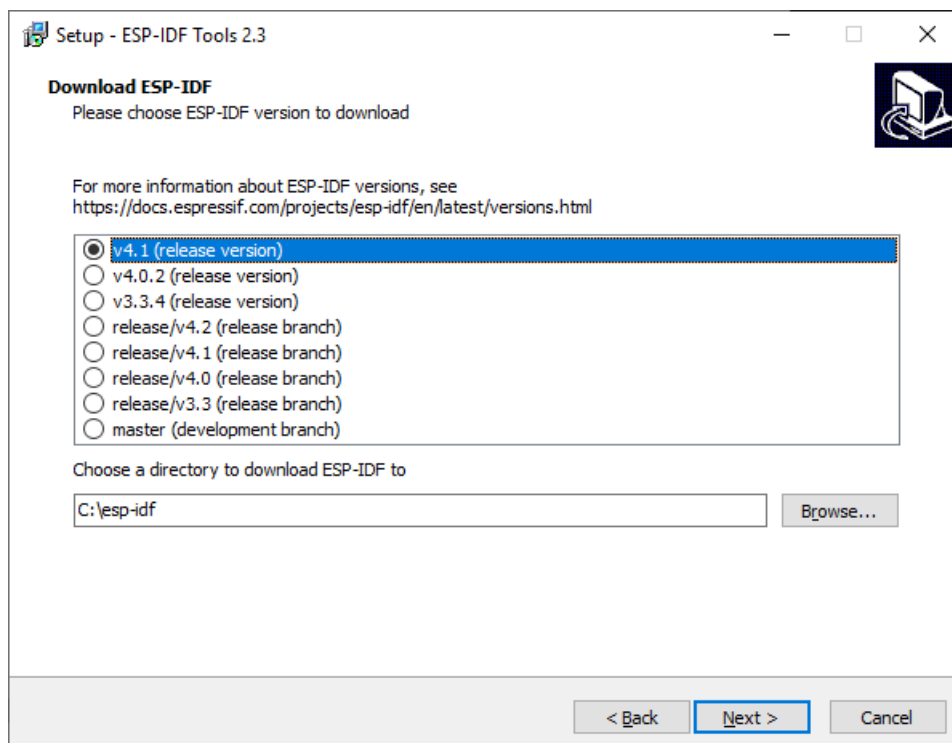
Otherwise select Download ESP-IDF



Select which ESP-IDF to install, we recommend v4.1

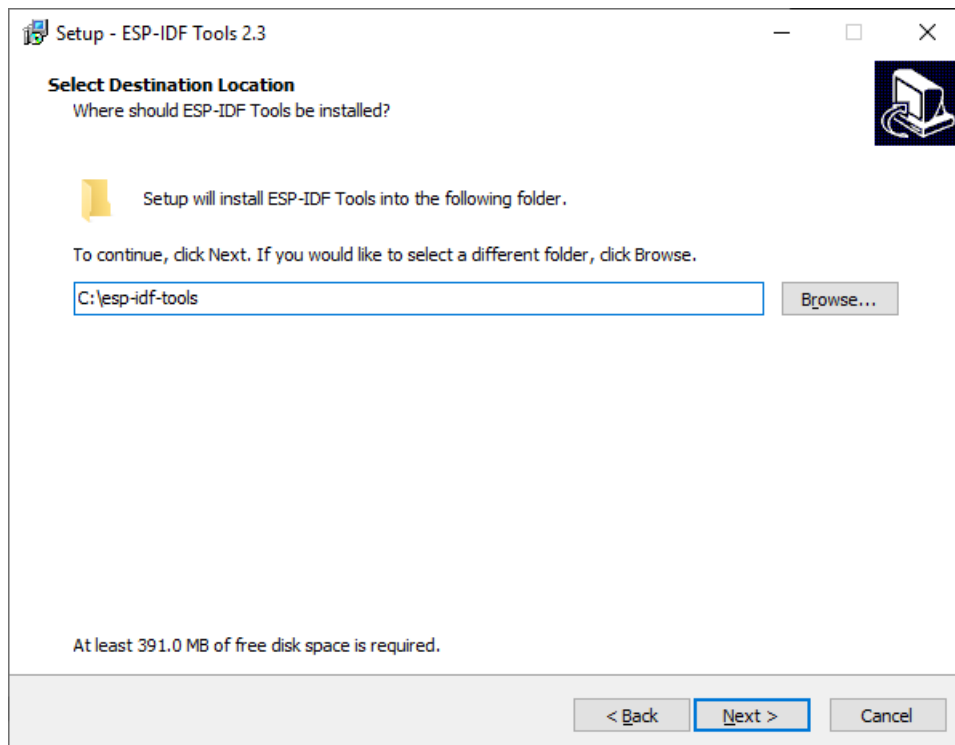
Install to a location on your system with no spaces in the path.

For example C:\esp-idf

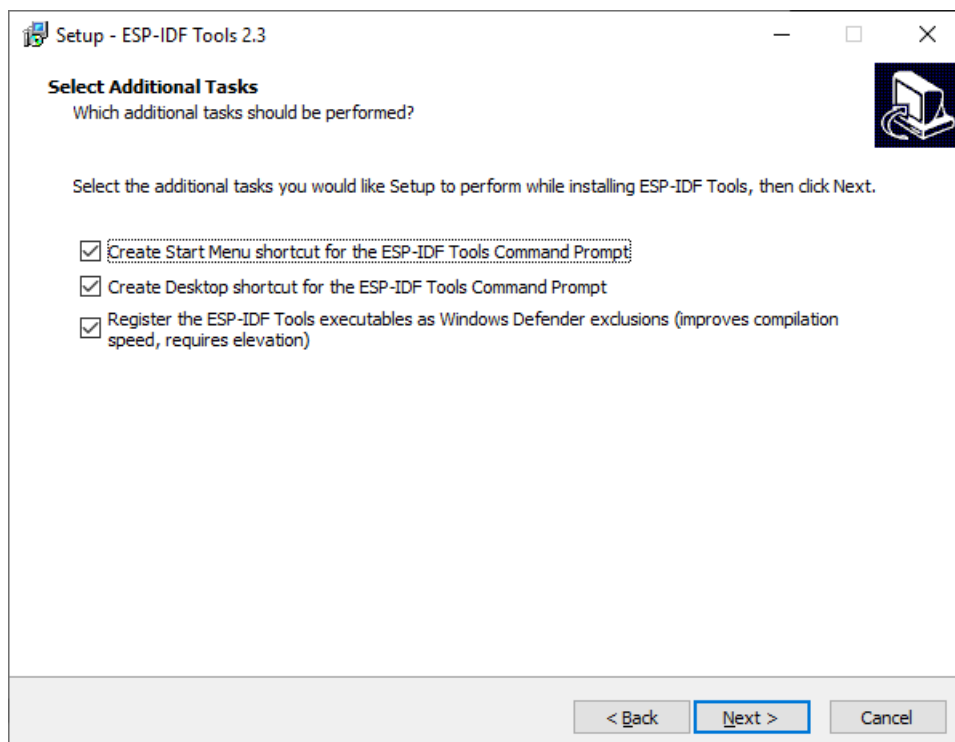


Select a location for the ESP-IDF Tools to be installed, again use a path that contains no spaces

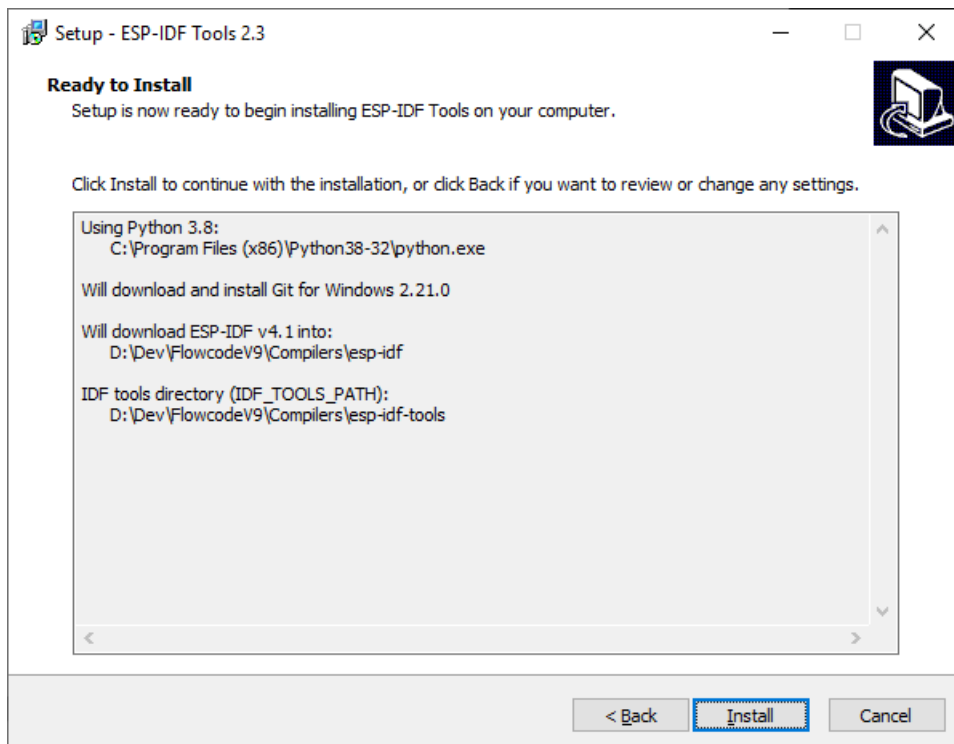
For example C:\esp-idf-tools



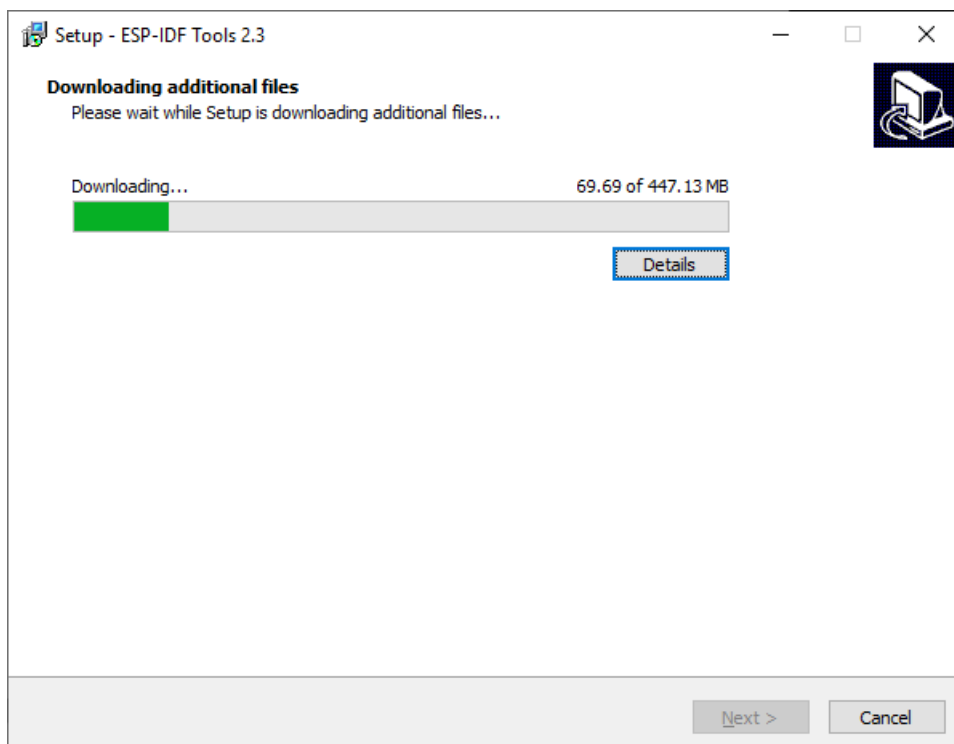
Select additional tasks, recommend keep all options checked and click Next.



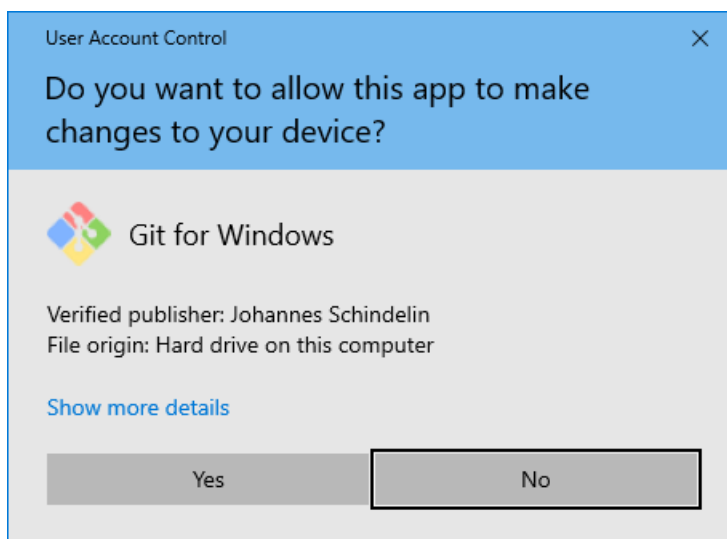
On the confirmation screen check the paths are correct and click Install



The various selected files will be downloaded and installed.



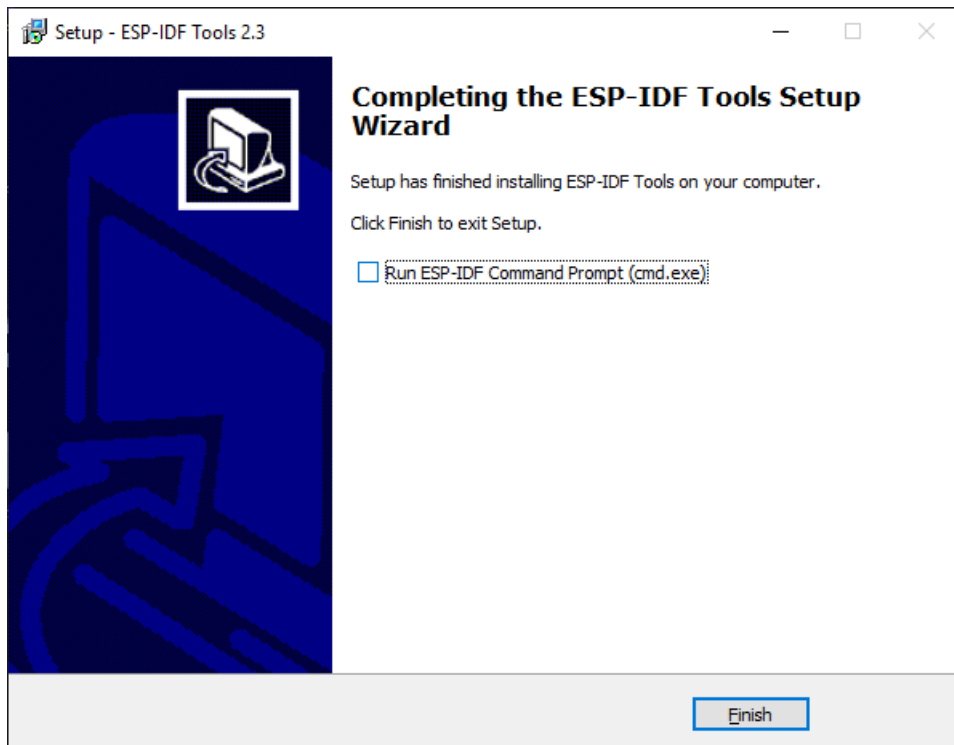
During the installation process you may get some of the following pop ups appearing



Click Yes to allow Git to be installed



Click Yes to allow Windows PowerShell to be installed

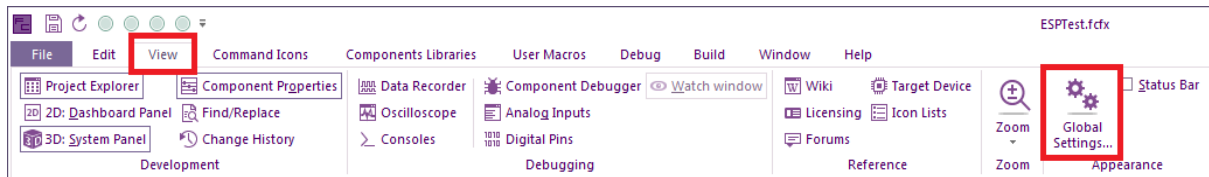


Installation complete

You do not need to run the ESP-IDF command prompt as we will be invoking this from Flowcode.

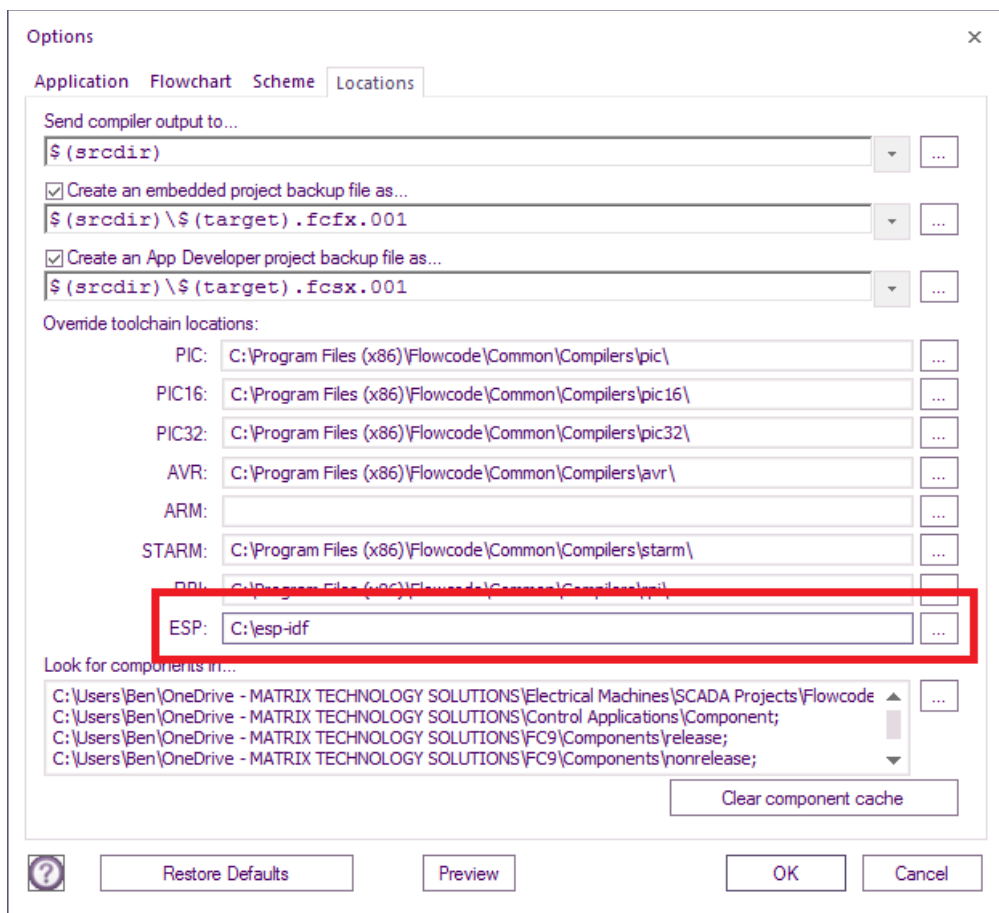
# Flowcode Configuration

In Flowcode click the View tab on the main Ribbon and select Global Settings.



In the Global Settings window select the Locations tab.

Enter the ESP-IDF path into the ESP: setting.



Click OK



## Flowcode ESP32 Projects

When you create a new Flowcode ESP32 project the first time you compile a folder will be created in the Flowcode project directory with the same name as the Flowcode project file. The folder contains all the standard build output for an ESP32 project.

The first compilation of a project will take a while to complete – around 5 minutes as all of the ESP32 libraries are pulled in from the ESP-IDF and compiled one by one. After the initial compilation subsequent compilations will be much faster.

Inside the folder is a file called sdkconfig, this file is a text file that contains the configuration for the ESP32 device. Any changes to this file will automatically trigger another extended compilation.

If you connect your ESP board before running Flowcode then the boards COM port will appear in the Flowcode project options. This will need to be selected and correct for the Compile to Chip menu option to function correctly.

